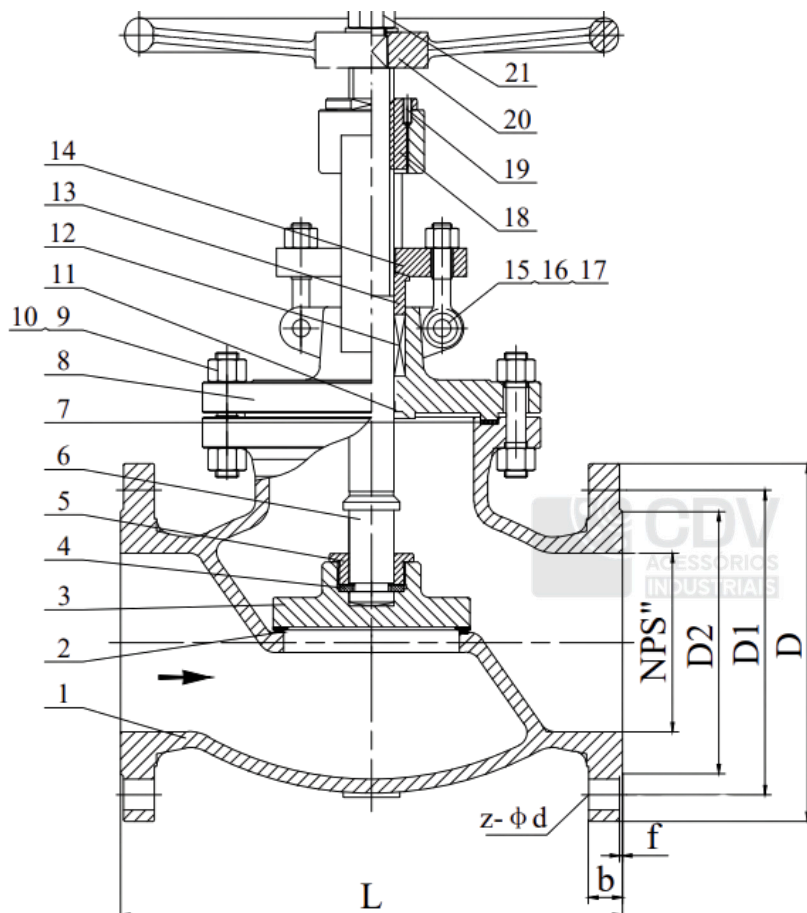


FIG.
35



NPS	L	D	D1	D2	b	z-φd	f
2"	203	ø150	ø 121	ø 92	16,5	4-ø19	2
2 1/2"	216	ø 180	ø 140	ø 105	18	4-ø 19	2
3"	241	ø 190	ø 152.5	ø 127	19.5	4-ø 19	2
4"	292	ø 230	ø 190.5	ø 157	24.5	8-ø 19	2
5"	356	ø 255	ø 216	ø 186	24.5	8-ø 22	2
6"	406	ø 280	ø 241.5	ø 216	26	8-ø 22	2
8"	495	ø 345	ø 298.5	ø 270	29	8-ø 22	2

Performance Specification

Nominal Pressure	150Lb(2.0MPa)	Test Medium
Shell Test	(3.0MPa)	Water
Seal Test	(2.2Mpa)	
Back Seal Test	(2.2mpa)	
Air Seal Test	80Lb(0.6MPa)	Air
Suitable Temperature	-29~425°C	
Suitable Media	Water/Steam/Oil	

Standards:

- 1 Design and manufacture: BS1873
- 2 Face to Face dimension: ASME B16.10
- 3 Flanged End: ASME B16.5 RF
- 4 Pressure temperature ratings: ASME B16.34
- 5 Pressure test: API 598

Material Table

21	H.W.Lock nut	C.S
20	Handwhell	ASTM A47
19	Screw	C.S
18	Stem nut	ZcuA10Fe3
17	Gland Nut	ASTM A 194-2H
16	Gland bolt	ASTM A 193-B7
15	Pin	C.S
14	Gland	ASTM A216 WCB
13	Bushing	ASTM A 182 F6a
12	PackIng	Graphite
11	Backseat	ASTM A216 WCB+13Cr
10	Nut	ASTM A 194-2H
9	Stud	ASTM A 193-B7
8	Bonnet	ASTM A 216 WCB
7	Gasket	304S.S.Jacketed Graphite
6	Stem	ASTM A 182 F6a
5	Disc cover	C.S
4	Split ring	C.S
3	Disc	ASTM A 105+13Cr
2	Seat ring	ASTM A216 WCB+13Cr
1	Body	ASTM A216 WCB
No.	Parts	Material

Product name: Globe Valve	Classe: 150
Designer: CDV INDUSTRIAL	Type: J41H
Date: MAR/2025	Drawing: Fig 35